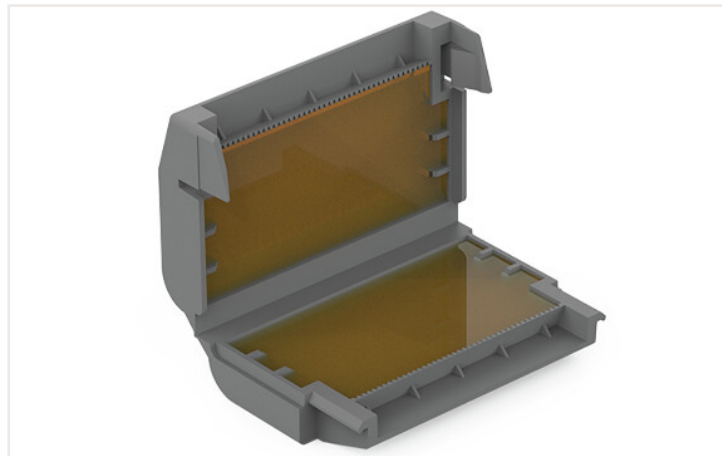


Fișă tehnică | Număr articol: 207-1333

Gelbox; pentru cabluri; Derivație; cu gel; Seriile 221, 2x73; conectori de max. 4 mm²; fără conectori pentru cutia de joncțiune; Mărimea 3; gri



Note on Packaging Unit (PU) and Subpackaging Unit (SPU):

If you order a full PU, you will receive our eco-friendly, sustainable cardboard blisters packed in a shelf-ready box.

If you order a quantity smaller than a full PU, you will receive the eco-friendly, sustainable cardboard blisters without a shelf-ready box.

Please refer to the system description for the splicing connectors that can be used.

Your benefits:

- Easy, fast and safe to use
- Can be used immediately and accessed again later
- Silicon-free
- Label-free
- Suitable for indefinite storage
- The complete system consisting of WAGO's gelboxes and splicing connectors has been VDE-tested and IPX8-certified.

Connection data

Connection 1

Actuation type

Locking system

Physical data

Width	33,6 mm / 1.323 inci
Height	17,8 mm / 0.701 inci
Depth	52,7 mm / 2.075 inci

Mechanical data

Mounting type	Flying leads
---------------	--------------

Material data

Note (material data)	Information on material data can be found here
Color	gri
Housing material	Polypropylene
Fire load	0 MJ
Weight	21 g

Environmental requirements

Ambient temperature (operation)	-55 ... +85 °C
Surrounding air temperature (storage)	0 ... +40 °C

Commercial data

PU (SPU)	36 (3) Stück
Country of origin VKOrg Germany	DE
GTIN	4055143997805
Customs tariff number VKOrg Germany	85389099990

Aprobări / certificate

Certificări locale specifice



Aprobare	Gama standard	Nume certificat
VDE VDE Prüf- und Zertifizierungsinstitut	EN 60998	400051938

Descărcări

Documentation

System Description

System Description 207 Series Gel boxes	pdf 1156.45 KB	↓
System Description 207 Series Gel boxes	pdf 1191.37 KB	↓

Additional Information

Technical Section	pdf 2142.18 KB	↓
-------------------	-------------------	-------------------

Bid Text		
207-1333	xml 3.57 KB	↓
207-1333	docx 20.39 KB	↓

CAD/CAE-Data

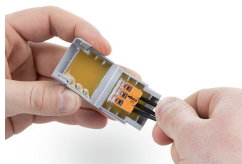
CAD data		CAE data	
2D/3D Models 207-1333	↓	ZUKEN Portal 207-1333	↓

Note de instalare

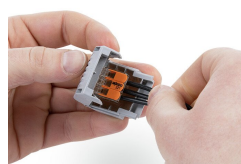
Installation



Place the wired connector in the Gelbox.



Place the wired connector in the Gelbox.



Close the Gelbox.



Close latch securely.



Re-accessible:
Open the Gelbox. Remove the gel. Rewire with new components.



Lift the flap and pull the cover perforation forward.



Press in the perforation on the sides.



Tear off the cover from the perforation.



As a counter display: Bend the rear flap at the fold, straighten it and fix it in the cardboard cut-out



If the flap is not required, tear off from the perforation.