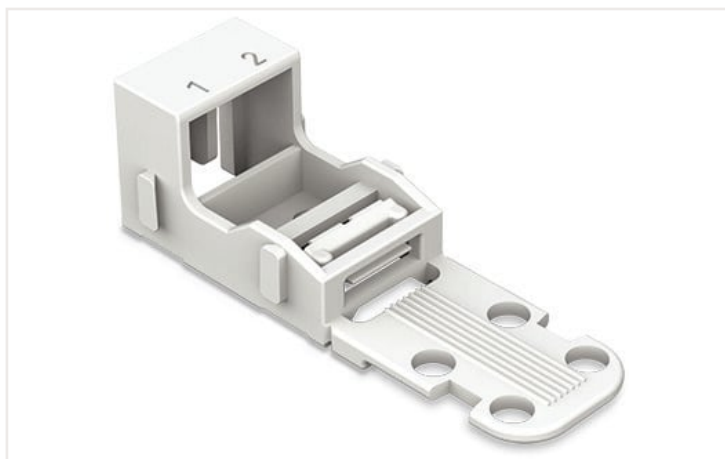


## Fișă tehnică | Număr articol: 221-502

Suport de montaj; pentru reglete cu 2 conductori; Seria 221 - 4 mm<sup>2</sup>; pentru montare cu șurub; alb

<https://www.wago.com/221-502>



Culoare:   alb

Similar cu ilustrația

### Physical data

Width	18,1 mm / 0.713 inch
Height from the surface	16,9 mm / 0.665 inch
Depth	52,8 mm / 2.079 inch

### Mechanical data

Mounting type	Screw mount
Suitable	for 2-wire connectors (4 mm <sup>2</sup> )

### Material data

Note (material data)	<a href="#">Information on material data can be found here</a>
Color	alb
Insulation material	Polyamide (PA66)
Flammability class per UL94	V0
Fire load	0 MJ
Weight	2.7 g

### Commercial data

eCl@ss 10.0	27-14-11-92
eCl@ss 9.0	27-14-11-92
ETIM 7.0	EC002848
ETIM 6.0	EC002848
PU (SPU)	50 (10) Stück
Packaging type	Box
Country of origin VKOrg Germany	CN
GTIN	4055143595827
Customs tariff number VKOrg Germany	39269097900

## Descărcări

### Documentation

#### Additional Information

Technical Section	pdf 2142.18 KB	<a href="#">↓</a>
-------------------	-------------------	-------------------

#### Bid Text

221-502	19.02.2019	xml 2.70 KB	<a href="#">↓</a>
221-502	04.01.2018	doc 24.00 KB	<a href="#">↓</a>

## CAD/CAE-Data

### CAD data

2D/3D Models 221-502	<a href="#">↓</a>
----------------------	-------------------

### CAE data

ZUKEN Portal 221-502	<a href="#">↓</a>
----------------------	-------------------

## 1 Produse compatibile

### 1.1 Accesorii opționale

#### 1.1.1 Marking

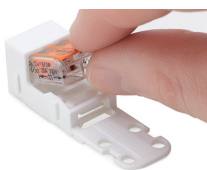
##### 1.1.1.1 Marking strip



#### Nr. articol: 210-833

Benzi de marcaj; 25 m pe rolă; Lățime de 6 mm; simplu;; Auto-adeziv; alb

## Note de instalare



Inserting a connector into the mounting carrier.

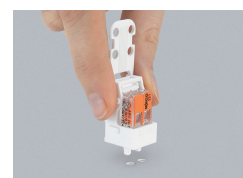
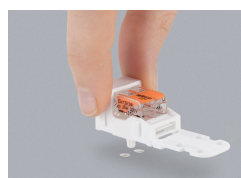


Removing a connector from the mounting carrier.

## Conductor termination



Inserting a conductor.



Horizontal screw mounting

Vertical screw mounting

Horizontal mounting via snap-in foot

Vertical mounting via snap-in foot

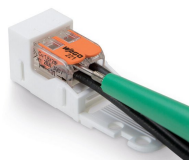
## Strain relief



Use a cable tie to secure the conductors to the strain relief plate.

The strain relief plate can be removed.

## Testing



Testing a connector mounted on the carrier via test slot.

## Application



Connecting a light to the mains.

## Marking



Labeling the mounting carrier.